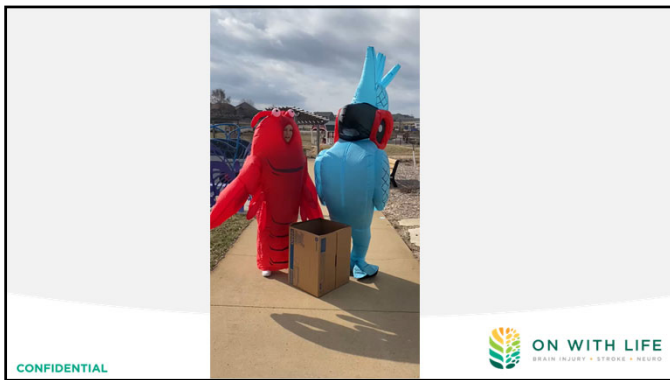
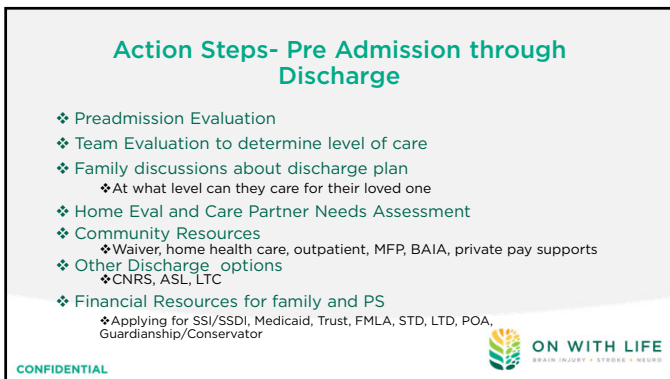


1



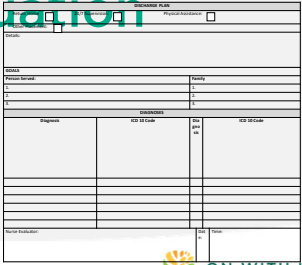
2




3

Preadmission Evaluation

- Referral to On With Life
- Team of reviewers
- Admission Committee
 - *start the talk of D/C Plan
- Decision
- Admission




CONFIDENTIAL



4


Team Evaluation

- ❖ Each discipline completes an evaluation of Person Served level of need at time of admission
- ❖ Start of discharge planning with primary team



5

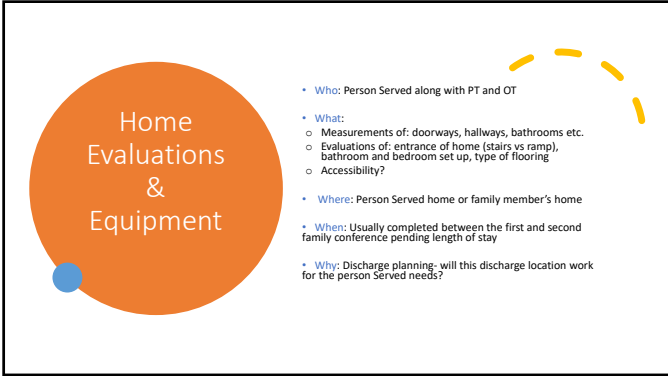
Family discussion about discharge plan



- Family conference in the first 7-10 days and then monthly thereafter
- Initial discharge plan often changes based on recommendations for after discharge. (level of care, supervision, level of assistance, home set up, etc.)
- Plan A, B, C, D, E.....

SMALL STEPS. GIANT STRIDES.

6



Home Evaluations & Equipment

- Who: Person Served along with PT and OT
- What:
 - Measurements of: doorways, hallways, bathrooms etc.
 - Evaluations of: entrance of home (stairs vs ramp), bathroom and bedroom set up, type of flooring
 - Accessibility?
- Where: Person Served home or family member's home
- When: Usually completed between the first and second family conference pending length of stay
- Why: Discharge planning- will this discharge location work for the person Served needs?

7



8



ON WITH LIFE
BRAIN INJURY + STROKE + NEURO

Care Partner Needs Assessment

SMALL STEPS. GIANT STRIDES.

9

More Services and Resource Options for Home

- ❖ Brain Injury Alliance of Iowa
 - ❖ Neuro Resource Facilitator (NRF)
- ❖ Private Pay Supports
 - ❖ Other care giver agencies **not covered by Medicaid or commercial insurance** (some accept Long Term Care Insurance)

13

ME THINKING



What if transitioning home is not the plan?

What other locations are available?

14



ON WITH LIFE
BRAIN INJURY + STROKE + NEURO

Community Based Neuro Rehabilitation Services (CNRS)

- On With Life-Residential Neuro Rehab (Des Moines)
- Neuro Restorative (Multiple Throughout Iowa)
- Community Neuro Rehab (Des Moines and Iowa City)
- Neuro Rehab Care (Waterloo)
- Opportunity Unlimited (Sioux City)



SMALL STEPS. GIANT STRIDES.

15

Assisted Living

- *Private Pay
- *Different Levels of Care (Tier System)
- *Pre-Admission Assessment
 - *Behaviors
 - *Medical Needs
 - *Mental Cognition
 - *Assist Level
 - *Hygiene and Personal Care
 - *Financial Plan


LIFE DOESN'T HAVE TO BE PERFECT
To be wonderful

16

Long Term Care


- Often used at OWL as an interim placement while family continues to prep for transitioning home
- Medicaid, Long Term Care Insurance, private pay
- Barriers to LTC discharge:
 - Age
 - Severity of injury/ assist level
 - Funding source
 - Location

CONFIDENTIAL




17

Financial Resources for Families and PS



- ❖ Has a SSI/SSDI application been started?
- ❖ Does the Person Served qualify for Medicaid?
 - ❖ If not, do they qualify for a Trust?
- ❖ Is the Person Served receiving FMLA, STD, or LTD from their employer?
- ❖ Would the Person Served benefit from a POA or Legal Guardian/ Conservator?

CONFIDENTIAL



18



19

Resources

- <https://hhs.iowa.gov/ime/members/medicaid-a-to-z/mfp>
- <https://hhs.iowa.gov/ime/members/medicaid-a-to-z/hcbs/waivers>
- <https://biaia.org/>
- <https://hhs.iowa.gov/ime/members/medicaid-a-to-z/omx#...text=CNRS%20s%20r%20specialized%20categories%20the%20physical%20manifestations%20of>

SMALL STEPS. GIANT STRIDES.

ONWITHLIFE.ORG

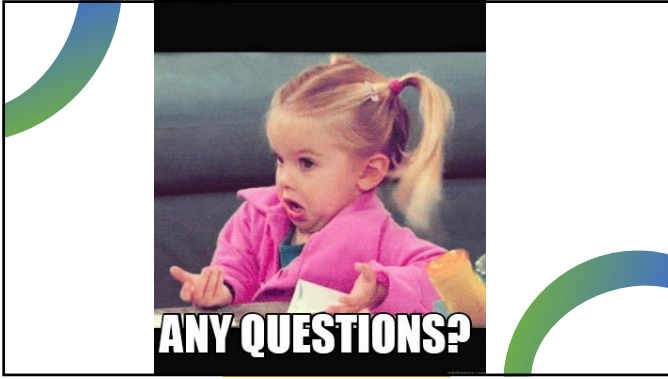
20

Josie Krause- BA, CBIS
Josie.Krause@onwithlife.org
 515-289-9629

Erin Meyer-BSW
Erin.Meyer@onwithlife.org
 515-289-9683

Contact information

21



22
